



# UNIQUE HEATED PRODUCTS

## Get your quote today! 586-783-5725

### HEATED HC/NOX SAMPLE PROBES

Conforms to EPA Title 40, part 86.1310-84 CFR

**Unique Heated Products' Heated Sample Probes** are designed for applications requiring extraction and thermal control of gaseous emissions samples. Superior insulations, a proprietary heater element, and an innovative packaging technique combine to make **UHPI's** Heated Sample Probe perform precisely to your applications design requirement.

Meet tomorrow's regulations today - CALL **UNIQUE**

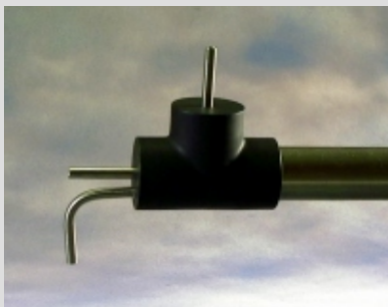
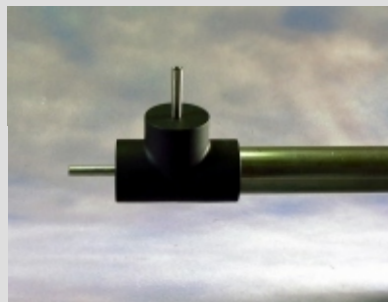


#### FEATURES AND SPECIFICATIONS

Model #PRB-1044

Sample extraction tip, sample outlet port, and thermocouple port. Automotive, Diesel, CEM, and Laboratory applications requiring sample stream temperature verification.

- 400° F Operational Temperature
- Up to 30 SCFH of flow



#### FEATURES AND SPECIFICATIONS

Model #PRB-1047

Sample extraction tip, sample outlet port, span tip/overflow port, and thermocouple probe port. Automotive, Diesel, CEM, and Laboratory applications requiring span overflow and sample stream temperature verification.

- 400° F Operational Temperature
- Up to 30 SCFH of flow

**Unique's Heated Sample Probes** are custom configured to suit your specific application. Overall length is determined by sample flow rate (i.e. The higher the flow, the longer the probe). Features include an all stainless steel exterior for maximum durability and 316 stainless steel throughout the wetted sample path. Call for a custom quote!



## UNIQUE HEATED PRODUCTS

22797 Macomb Industrial Dr.  
Clinton Twp. MI 48036

Toll Free 800-628-8239

or Local 586-783-5725

[www.heatedproducts.com](http://www.heatedproducts.com)

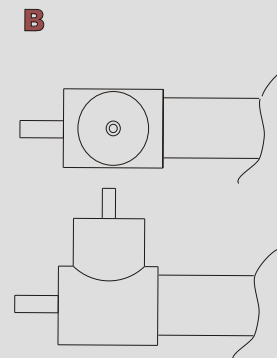
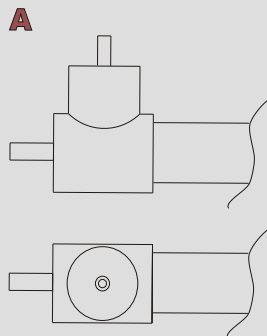
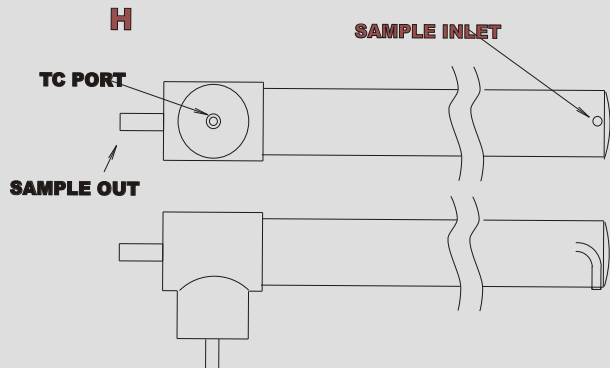


**UNIQUE HEATED PRODUCTS**

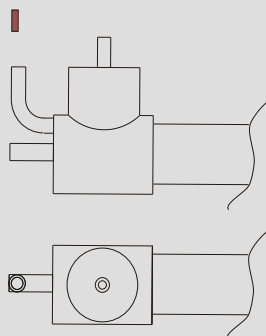
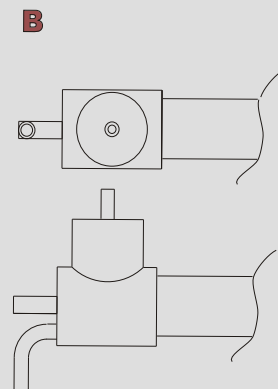
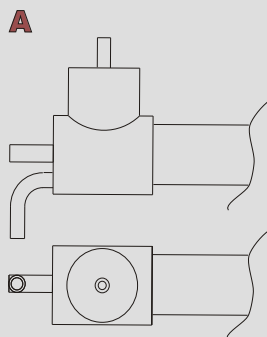
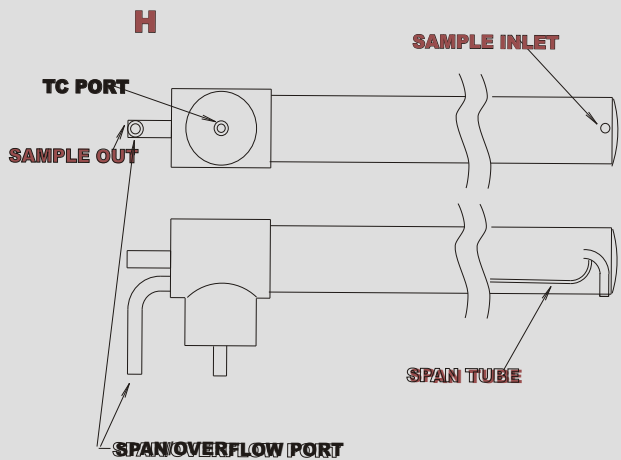
**Get your quote today!  
586-783-5725**

**HEATED SAMPLE PROBE  
TIP TO END ORIENTATION CHART**

**STANDARD PROBE**



**PROBE WITH SPAN OVERFLOW**



**UNIQUE HEATED PRODUCTS**

22797 Macomb Industrial Dr.  
Clinton Twp. MI 48036



**UNIQUE HEATED PRODUCTS**

**Get your quote today!  
586-783-5725**

## HEATED HC/NOX SAMPLE PROBE ORDERING GUIDE

EXAMPLE: PRB-1047-B-4-20-32-S-C-A-AK-RXX-000

FIELD NUMBER:                   1   2   3   4   5   6   7   8   9   10   11  
  ^   ^   ^   ^   ^   ^   ^   ^   ^   ^   ^

**1. PROBE MODEL**

- 1042-SAMPLE TUBE ONLY  
(NO SPAN PORT)
- 1044-SAMPLE TUBE AND  
THERMOCOUPLE PORT
- 1047-SAMPLE TUBE, SPAN  
PORT, AND (MOST COMMON)
- THERMOCOUPLE PORT
- 1136-HIGH FLOW, SAMPLE TUBE

**2. TEMPERATURE RANGE**

- A-100° C (212° F)
- B-200° C (392° F) (MOST COMMON)
- C-300° C (572° F)
- D-400° C (752° F)
- E-500° C (932° F)

**3. PORT SIZE**

- |            |        |
|------------|--------|
| ENGLISH    | METRIC |
| 4-1/4 INCH | M4-4MM |
| 6-3/8 INCH | M6-6MM |
| 8-1/2 INCH | M8-8MM |

**4. OUTER SLEEVE DIAMETER**

- 8-1/2 INCH
- 12-3/4 INCH
- 16-1 INCH
- 20-1-1/4 INCH
- 24-1-1/2 INCH

**5. LENGTH IN INCHES**

- TOTAL LENGTH OF HEATED AREA  
EXCLUDING TUBE ENDS

**6. SAMPLE TUBE MATERIAL**

- S-STAINLESS STEEL
- T-TEFLON™

**7. INLET/OUTLET ORIENTATION**

- SEE CHART

**8. HEATER VOLTAGE**

- A-120 VAC
- B-230 VAC
- G-12 VDC
- H-208 VAC
- I-480 VAC

**9. SENSOR TYPE**

- A-THERMOCOUPLE (A OR J)
- B-THERMISTOR
- C-RTD
- D-ADJUSTABLE T-STAT

**10. POWER CABLE TYPE (LENGTH)**

- A-7 PIN CONNECTOR (13 AMP MAX)
- B-7 PIN CONNECTOR (45 AMP MAX)
- D-LOOSE WIRE W/STRIPPED ENDS
- E-SO CORD W/NEMA 5-15-PLUG
- F-FLEXIBLE CONDUIT
- G-MIL SPEC CONNECTOR
- H-CLASS 1 DIV 2
- I-CLASS 1 DIV 1
- J-3 PIN MOLEX CON. (11 AMP MAX)
- K-SO CORD W/NEMA 6-30 PLUG
- L-REMOTE T-STAT
- M-MALE TWIST LOCK W/TC
- N-9 PIN CONNECTOR (13 AMP MAX)
- R-CONNECTOR BOX W/7 PIN CON.

**11. OPTIONS**

- FOR ALL OPTIONS PLEASE SEE  
OPTIONS PAGE OR CONTACT  
UHP SALES AND TECH SUPPORT



**UNIQUE HEATED PRODUCTS**

22797 Macomb Industrial Dr.  
Clinton Twp. MI 48036